

THE JENYNS

a spectacular 4 bedroomed detached home

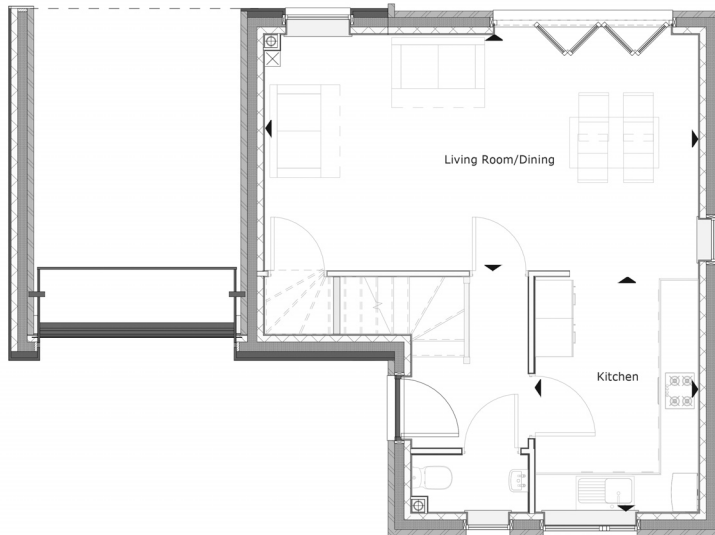


The Jenyns is an attractive four-bedroom home. It includes parking provision with integral undercroft, entrance hall with ground floor WC and open plan kitchen, dining, living room.

The first floor consists of a family bathroom and four bedrooms. The master bedroom includes an ensuite.

THE JENYNS

4 BEDROOM DETACHED HOUSE

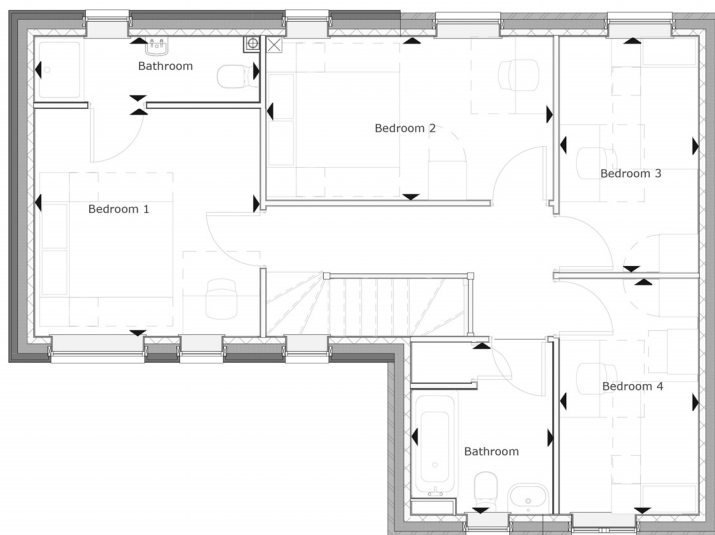


Ground Floor

Room dimensions

Living/Dining 6.78m x 3.70m
22'3" x 11'4"

Kitchen 2.58m x 3.12m
8'5" x 13'3"



First Floor

Room dimensions

Bedroom 1 3.53m x 3.57m
11'7" x 11'8"

Bedroom 2 4.50m x 2.56m
14'9" x 8'4"

Bedroom 3 3.81m x 2.18m
12'6" x 7'2"

Bedroom 4 2.20m x 3.69m
7'2" x 12'1"

Specifications: This information is for guidance only and does not form any part of a contract or constitute a warranty.

Illustrations are of typical elevations and may vary. Floor plan are not drawn to scale.

Room dimensions are subject to a +/- 50mm(2") tolerance and are based on a maximum dimensions in each room.

Please consult your sales advisor on site for specific elevations, room dimensions and external finishes.